



2



1



1

Large 235sqm Townhouse Privately Positioned

Enjoy privacy and comfort in this beautifully presented townhouse with its delightful leafy landscaped east facing courtyard - a haven in today's busy life. This surprisingly quiet and spacious 235sqm approx townhouse offering open plan living is situated in the back of the complex and is ready for the new owner to make it theirs.

A seamless flow from outdoor entertaining to open plan dining, galley styled kitchen and with the large light filled lounge area with high cathedral ceilings.

Upstairs there are 2 great bedrooms- the master being king size with double robes and the second bedroom a queen with built-ins. Both are serviced by a neat and tidy bathroom and two separate toilets.

The rear of the property features a private fully fenced wrap around courtyard garden ideal for alfresco dining or to sit and enjoy a quiet morning coffee or lunch with friends.

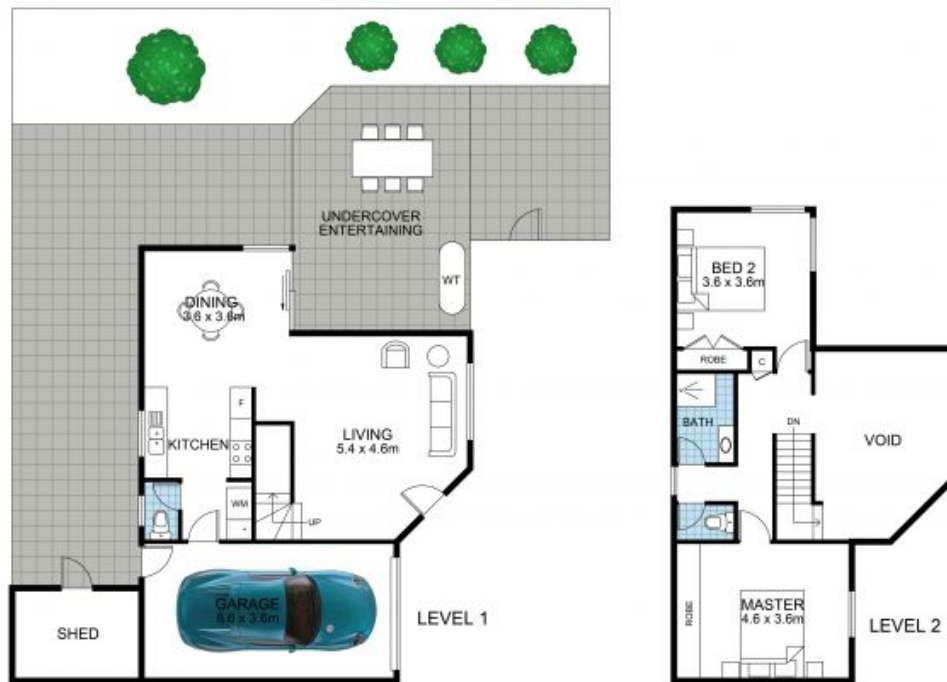
In a well maintained complex of 6 with low body corporate fees and just a stroll from transport and shops.

Price: \$775,000



Robert Lamprecht


0419 999 989



5/34 Edmondson Street, Lutwyche

Internal 122m² | External 69m² | Garage 24m² | Total 235m²

The following floor plan is provided for informational purposes only and does not constitute a legally binding representation of the property. This floor plan is a visual illustration and approximation of the layout and dimensions of the property as observed at the time of creation. All measurements are from the inside of the wall to opposite wall. Bedroom measurements are taken from the back of the cupboard to wall.

Floor Plan crafted with care by  Ratley